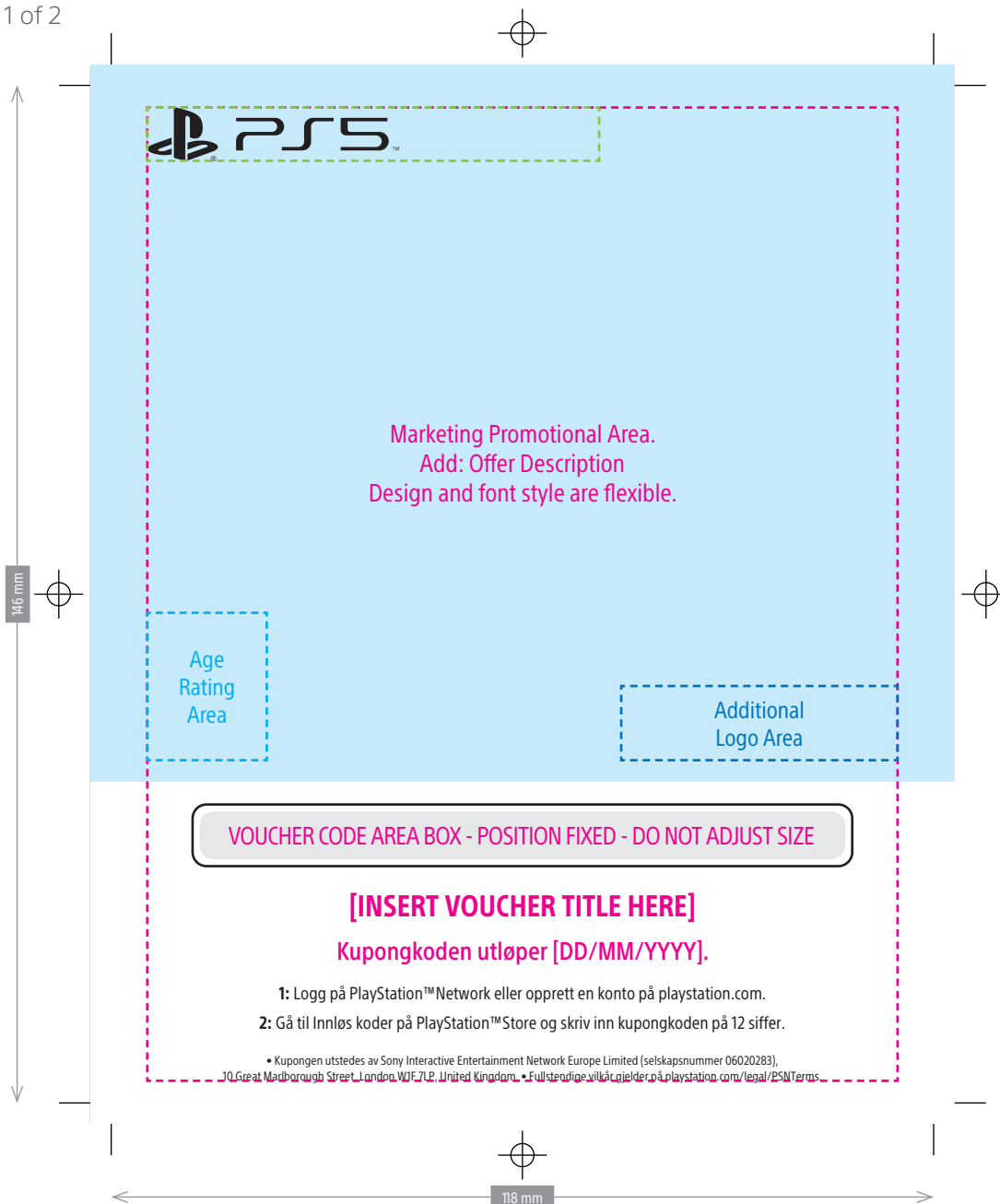


Created: <b>YYYY.MM.DD</b>	Artwork version: <b>v1</b>	Game Title: <b>XXXXXXX_XXXXX</b>
Ref: <b>XXXXXXX_XXXXX</b>	Language: <b>XXXXXXX_XXXXX</b>	
<b>Cyan</b>	<b>Magenta</b>	<b>Yellow</b>
<b>Black</b>		

Page 1 of 2



Designer: <b>XXXXX XXXXX</b>	Region: <b>EMEA</b>
Template: <b>PSS DLCVCH - Front</b>	3rd party
SKU: <b>Norwegian</b>	Template Last Updated: <b>2022.07.01</b>
Final size: <b>118x146 mm</b>	

**IMPORTANT: PLEASE READ THE INFORMATION PAGE INCLUDED IN THE TEMPLATE PACKAGE.**

## LEGEND

1. Green dashed marquee lines indicate the PS Family + PS Platform logo(s) area.
2. Magenta dashed marquee lines indicate where software marketing messages are permitted to be placed. Marketing communications should not be placed over or interfere with voucher template elements.
3. Cyan dashed marquee lines indicate areas where template elements are placed. Marketing communications should not be placed over or interfere with these areas where possible.
4. The dark blue marquee lines indicate where additional logos may be placed on the front.
5. 20% cyan indicates the background graphics area.
6. White indicates the important text and legal area. MUST remain white.

## LEGAL AREA

Colour Code for legal area.

1. **For Positional Only (FPO)**. Mandatory: The copy within these brackets [ ] should be filled in where applicable and changed to black. **REMOVE BRACKETS AFTER USE [ ]**.
2. **ALL TEXT MUST BE SET TO BLACK (100%K) ONCE THE FIELDS HAVE BEEN COMPLETED.**

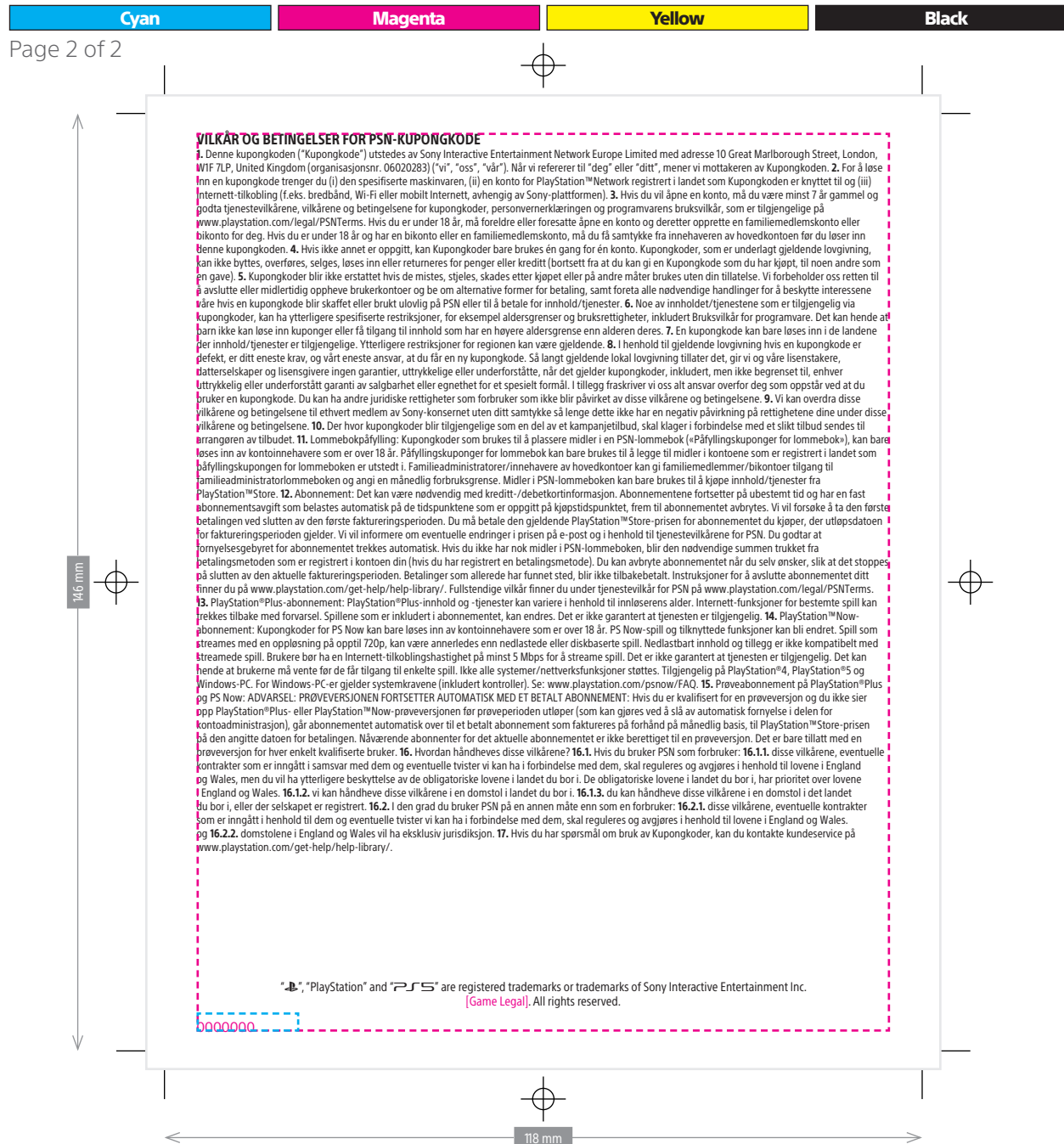
## LEGEND

1. Green dashed marquee lines indicate the PS Family + PS Platform logo(s) area.
2. Magenta dashed marquee lines indicate where software marketing messages are permitted to be placed. Marketing communications should not be placed over or interfere with voucher template elements.
3. Cyan dashed marquee lines indicate areas where template elements are placed. Marketing communications should not be placed over or interfere with these areas where possible.
4. The dark blue marquee lines indicate where additional logos may be placed on the front.
5. 20% cyan indicates the background graphics area.
6. White indicates the important text and legal area. MUST remain white.

## LEGAL AREA

### Colour Code for legal area.

- 1. **1st Party Use Only.** Mandatory: insert the "PlayStation Studios logo" sentence when required.  
**3rd Party publishers MUST REMOVE the PlayStation Studios sentence.**
- 2. **For Positional Only (FPO).** Mandatory: The copy within these brackets [ ] should be filled in where applicable and changed to black. **REMOVE BRACKETS AFTER USE [ ]**.
- 3. **ALL TEXT MUST BE SET TO BLACK (100%K) ONCE THE FIELDS HAVE BEEN COMPLETED.**



Designer: XXXXX XXXXX

Region: EMEA

Template: PSS DLCVCH - Back

XXX party

SKU: Norwegian

Template Last Updated: 2022.06.13

Final size: 118x146 mm